

FAMILY VIOLENCE

"Family violence" includes many different forms of **ABUSE** that adults or children may experience in their intimate, kinship or dependent relationships. Family violence also includes being mistreated or being neglected.

Family violence is against the law in Canada. An abuser can be charged with an applicable offence.

Some common types of family violence are:

- Physical abuse
- Sexual abuse and exploitation (being used for a sexual purpose)
- Psychological or emotional abuse
- Economic or financial abuse
- Neglect

Criminal charges could include:

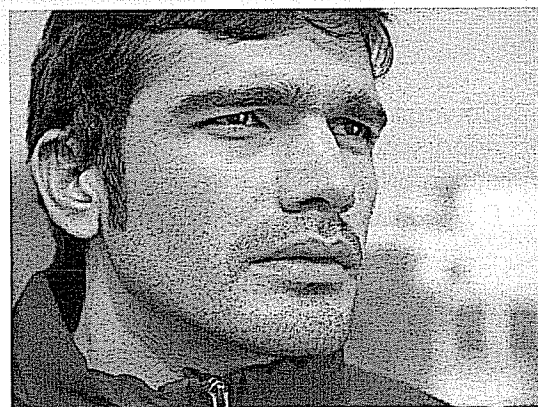
- Criminal harassment (sometimes called "stalking")
- Uttering threats
- Assault causing bodily harm
- Sexual assault
- Forceful confinement
- Intimidation
- Murder, Attempted murder, Infanticide

For detailed information, please refer to the Justice Canada website at:

<http://www.justice.gc.ca/eng/pi/fv-vf/about-aprop/index.html>

"If I had only known..."

Brothers Speaking to Brothers about Family Violence



This brochure was developed by the Afghan community for the Afghan community through working groups and focus group discussions. These groups comprised of community leaders and scholars, survivors of family violence, perpetrators, settlement workers, violence against women workers and law enforcement officers. Information for this brochure was also obtained from the Justice Canada as well as other relevant websites.

Disclaimer: This publication contains general information only. It is not a substitute for getting legal advice about your particular situation.

This project was proudly funded by Citizenship and Immigration Canada.



Citizenship and
Immigration Canada

Citoyenneté et
Immigration Canada



For People For Change
FAMILY SERVICE TORONTO

If you are abusing your spouse or a family member whom you are responsible to love and protect, here is how you can STOP and get HELP.

Resources

Ask for a Pashto/Dari/Farsi interpreter to assist you with these resources.

Information about abuse

www.justice.gc.ca under **Abuse is Wrong in Any Language** and **Stalking is a crime called criminal harassment**

Partner Assault Response Program (PARS)

1-800-267-4406

CAMH Center for Addiction & Mental Health

www.camh.net / 1-800-463-6273

John Howard Society of Canada (Head office)

www.johnhoward.ca / 613-384-6272

The mission of this organization is to assist adult men in conflict with the law and/or at risk of coming into conflict with the law.

Community Legal Education Ontario (CLEO)

www.cleo.on.ca / 416-408-4420

Community legal clinic that produces material in different languages

Information for newcomers to Ontario

www.settlement.org



A Healthy Relationship is...

Trusting and respecting your partner at home and around others

Listening to each other

Making decisions together with your partner and valuing each other's opinions

Supporting each other's decisions

Considering your partner's feelings before you say or do things

Accepting the other for who they are - not wishing they would change

Respecting each other's values and opinions

You have a responsibility and the right to live in violence free environment together with your family

Immigration and Family Law

Violence against a spouse, child or any other family member is against the law.

A refugee claimant convicted of a serious criminal charge, could be found inadmissible and thus removable from Canada.

A person convicted of a criminal offence against his spouse, will not be able to sponsor a member of the family class for a period of 5 years after the date of conviction.

A person convicted of a serious criminal offence, may not be able to apply for citizenship for a period of 3 years after the date of conviction.

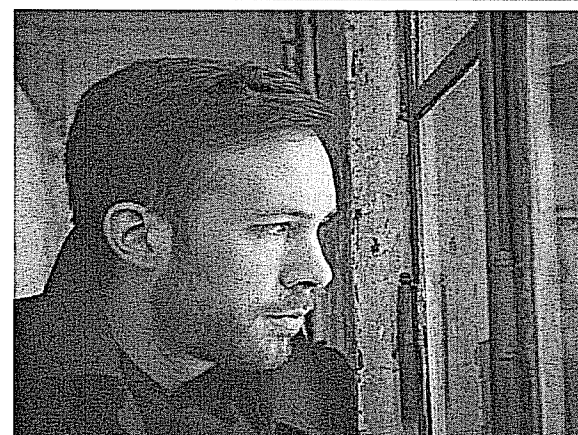
A landed immigrant can also be convicted of a criminal offence and be deported back to his country of origin, after serving jail time in Canada first.

A person who is found guilty and convicted of a criminal offence will be less likely to get custody of his children.

Other consequences

A criminal conviction may have adverse impact on all aspects of one's life, including ability to secure certain types of employment, obtain certain types of professional license, or enter certain fields of study.

Being found guilty of a criminal offence against one's spouse may indicate one's propensity towards violence and aggression. This would adversely impact the person's ability to secure custody of his children, or to have regular and overnight access to his children. Courts often order access regimes that involve meeting children for a couple of hours each visit at an access centre.



- Do you insult, belittle, ignore, or get angry when your partner initiates an action or idea?
- Do you become hostile or aggressive when your partner says 'no'?
- Do you control how she dresses, where she goes, and who she talks to?
- Do you force your wife to have sex?
- Do you get jealous for no reason?
- Do you excessively drink alcohol or use drugs?
- Do you see yourself as superior to your partner?
- Do you have negative opinions of women?
- Do you act macho and put down your partner's physical limitations?
- Are you inconsiderate of other people's feelings and values?
- Do you strongly believe in traditional male and female roles?
- Do you put down your partner with your words or actions?
- Do you blame your partner for your problems?
- Do you insist on making all the household decisions?

What is Abuse?

Abuse is when one person uses his or her power to control, intimidate, isolate or hurt another person. The abuser may be either male or female. Although both women and men can be victims of domestic violence, the majority of this violence involves men abusing women.

Early warning signs that indicate you may be abusive

Are you quickly angered?

Do you express anger physically and violently?

Do you hit and threaten your partner?

Do you yell at your partner?

Do you blame your partner for making you lose control?

